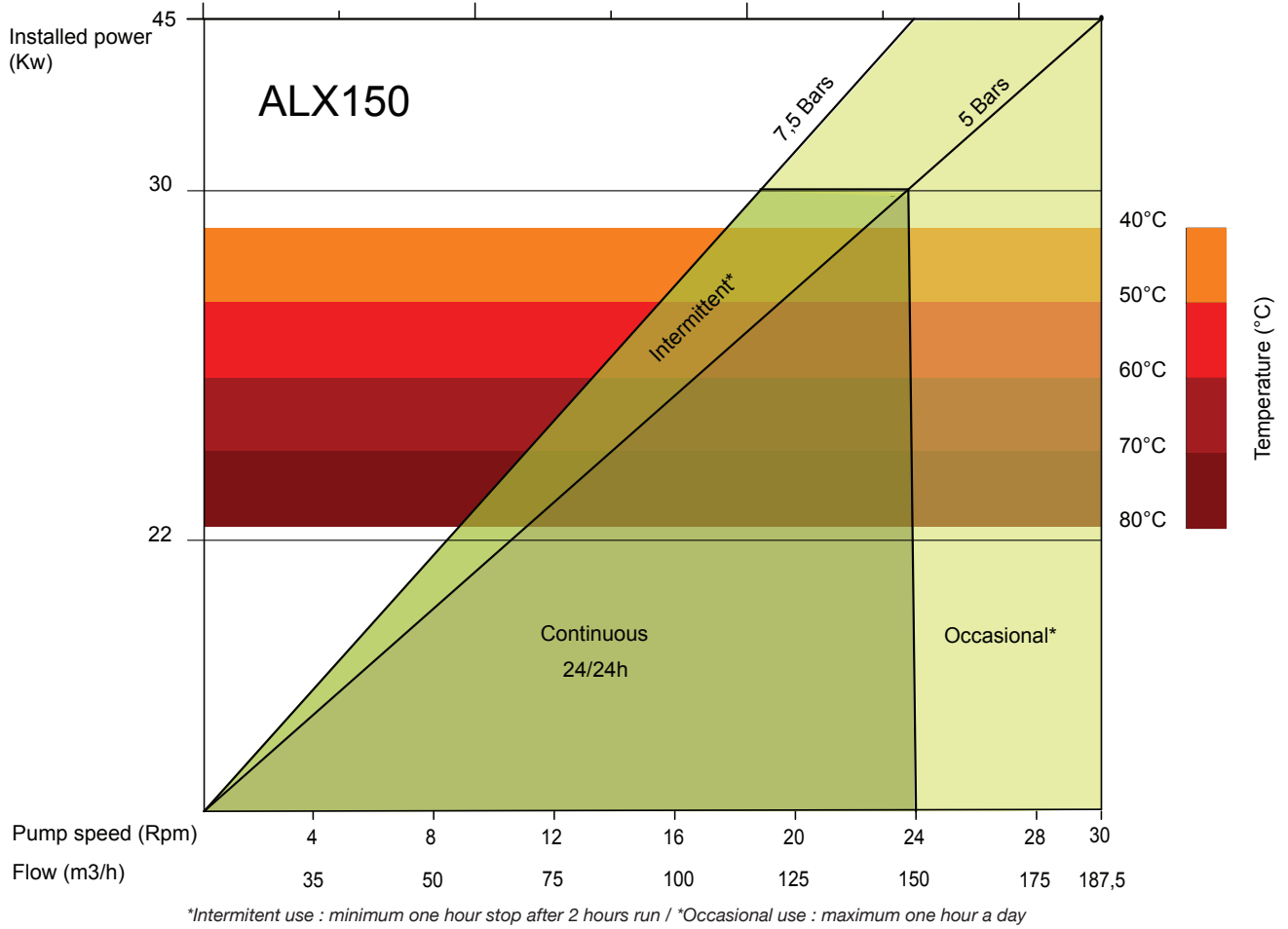
The background features several thick, curved, olive-green lines that sweep across the page from the left side towards the right, creating a sense of motion and flow.

**ALBIN PUMP ALX**  
**HOSE PUMPS**  
**TECHNICAL DATASHEETS**

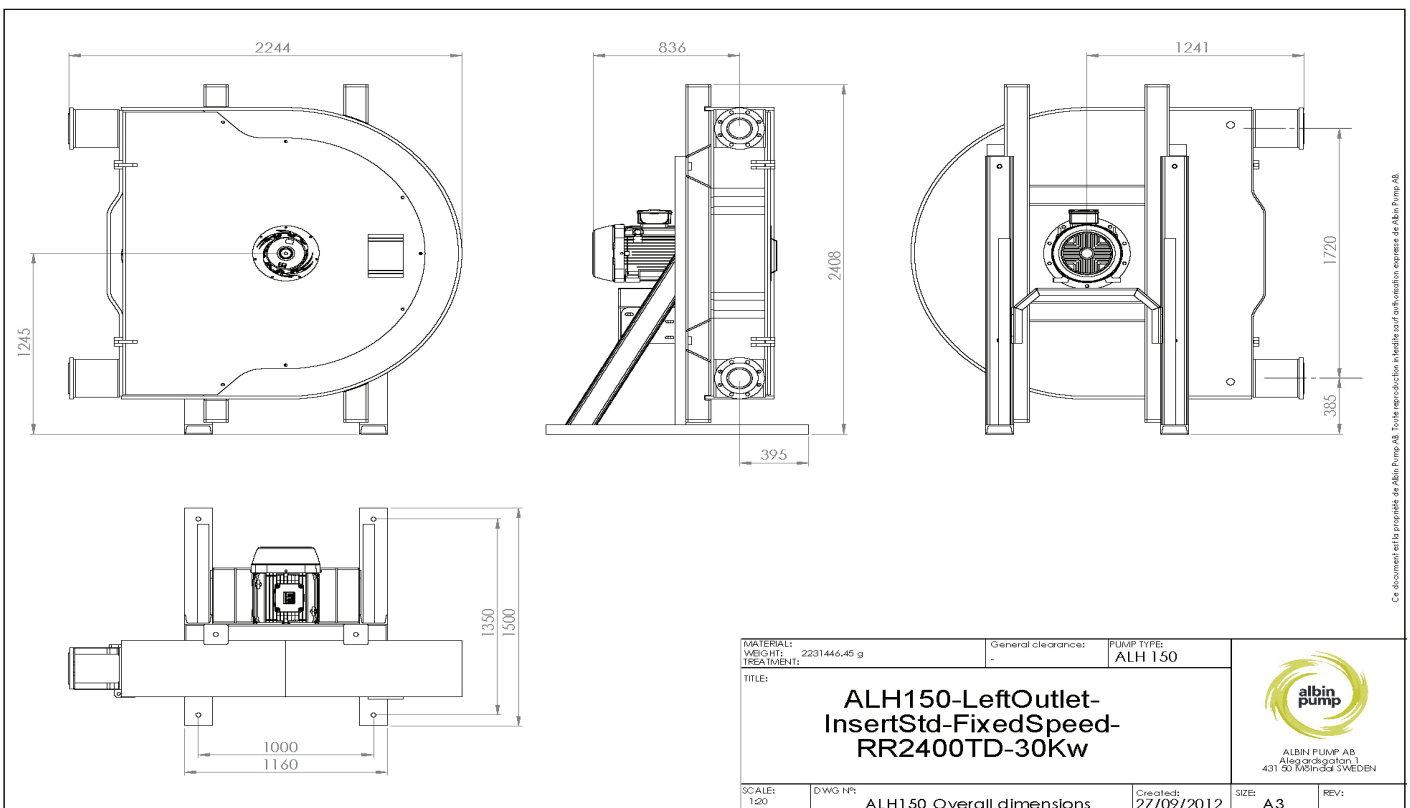
# ALX150 - DATA SHEET

# ALX

**albin pump**  
since 1928



## DIMENSIONS



**GB**

**ALBIN PUMP SAS**

Z.I. du Meyrol  
6, Avenue du Meyrol  
F-26200 MONTELIMAR  
FRANCE  
Tel +33 (0) 4 75 90 92 92  
Fax +33 (0) 4 75 90 92 40  
courrier@albinpump.fr  
www.albinpump.com

For more information about our worldwide locations, approvals, certifications, and local representatives, please visit [www.albinpump.com](http://www.albinpump.com).  
ALBIN PUMP reserves the right to incorporate our latest design and material changes without notice or obligation.  
Design features, materials of construction and dimensional data, as described in this bulletin, are provided for your information only and should not be relied upon unless confirmed in writing.  
Certified drawings are available upon request. © 2008 ALBIN PUMP